



Rabbit anti MEK1/2 (paired S218/S222) Polyclonal Antibody

Alternative Name(s): Mitogen-activated protein kinase kinase 1; MAPKK1; MEK1; MKK1

Order Information

- **Description:** MEK1/2 (paired S218/S222)
- **Catalogue:** 620-180
- **Lot:** See label
- **Size:** 100ug/200ul
- **Host:** Rabbit
- **Clone:** nan
- **Application:** IHC(P), WB
- **Reactivity:** Hu, Ms, Rt

ANTIGEN PREPARATION

A synthetic peptide surrounding the epitope –SMANS- without phosphorylation of human MEK1/2. This sequence is identical among human, rat, mouse, chicken.

BACKGROUND

The MEK1 & 2 (MAPKK1/2) are members of tyrosine/threonine protein kinase family that activate the ERK1+2/MAPK enzymes by phosphorylation. MEK 1 + 2 are also activated by dual-phosphorylation, which occurs on serine 218 and 222, in the activation loop of the MEKs. The MEK1 & 2 are regulated by phosphorylation by one of the MEK kinases.

PURIFICATION

The Rabbit IgG is purified by Epitope Affinity Purification

FORMULATION

This affinity purified antibody is supplied in sterile Phosphatebuffered saline (pH7.2) containing antibody stabilizer

SPECIFICITY

This antibody recognizes ~44/45 kDa of human MEK1 protein without phosphorylation sites of Ser 218/222 or MEK2(pS222/226). It does not cross react to phospho MEK1/2. This antibody also reacts with mouse and rat, chicken. The other species are not tested.

STORAGE

The antibodies are stable for 24 months from date of receipt when stored at –20oC to –70oC. The antibodies can be stored at 2oC-8oC for three month without detectable loss of activity. Avoid repeated freezing-thawing cycles.

APPLICATIONS/SUGGESTED WORKING DILUTIONS*

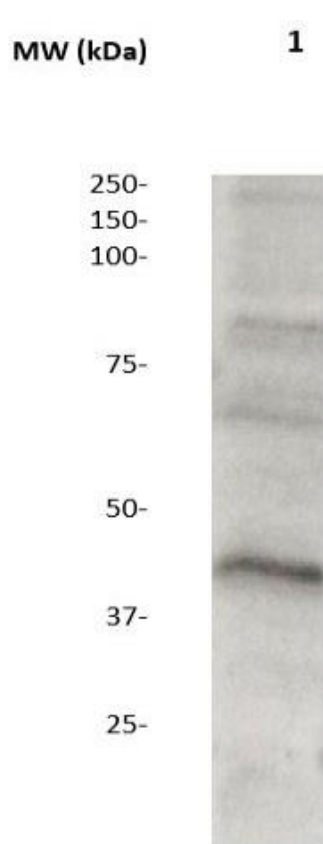
- Western Blot: 0.1-1 µg/ml
- ELISA: 0.01-0.1 µg/ml
- Immunoprecipitation: 2-5 µg/ml
- IHC: 2-10 µg/ml
- Flow cytometry: Not tested
- Molecular Weight: 44.0
- Positive Control: Kidney Tissue
- Cellular Location: Cell Membrane

*Optimal dilutions should be determined by researchers for the specific applications.

FOR RESEARCH USE ONLY.

AbboMax, Inc 2528 Qume Drive, Suite 8, San Jose, California 95131, USA
1 408-573-1898 (Tel). 1 408-573-1858 (Fax). www.abbomax.com info@abbomax.com

DATA ATTACHMENTS



Western Blot: The whole cell lysates derived from A431 were immunoblotted by Rabbit anti-MEK1/2 (paired S218) antibody (Cat#620-180) at 1:1000. Observed a major immunoreactive band at molecular weight ~44 kDa.

REFERENCES

FOR RESEARCH USE ONLY.